

- Set Program Access and Defaults
- Windows Catalog
- Windows Update
- EarthLink TotalAccess
- Microsoft Update
- HP Solution Center
- Software Updates
- Accessories
- Games
- Startup
- Internet Explorer
- MSN
- Outlook Express
- Remote Assistance
- Windows Media Player
- Windows Messenger
- Windows Movie Maker
- Intel PROSet Wireless
- Keyspan High Speed USB Serial Adapter
- Logitech
- Nobeltec
- Utility
- Acrobat Reader 5.0
- Maxtor
- Retrospect
- Hewlett-Packard
- HP Share-to-Web
- American Greetings Screensaver Manager
- American Greetings Creatacard 7
- Internet Explorer
- EarthLink MailBox
- EarthLink TotalAccess
- Stay Organized Q&E
- Internet Explorer (2)
- MediaFACE 4.0
- Alfred Interactive
- QuickTime
- Adobe
- Solero Music Viewer
- Sunhawk
- Wal-Mart
- LAME
- EarthLink Protection Control Center
- MediaFACE 4.2

- Sonic
- MediaFACE 4.0
- MediaFACE 4.0 Calibration Wizard
- MediaFACE 4.0 Design Wizard
- MediaFACE 4.0 Help
- HP
- Nero
- Accessibility
- Entertainment
- Address Book
- Calculator
- Command Prompt
- Notepad
- Paint
- Program Compatibility Wizard
- Synchronize
- Tour Windows XP
- Windows Explorer
- WordPad
- Scanner and Camera Wizard
- System Tools
- Communications
- Remote Desktop Connection
- Final Draft Tagger
- Quicken 2008
- Adobe Reader 8
- Nikon Scan 4
- SnagIt 8

- Backup
- Character Map
- Disk Cleanup
- Disk Defragmenter
- Files and Settings Transfer Wizard
- Scheduled Tasks
- Security Center
- System Information
- System Restore
- Internet Explorer (No Add-ons)

Click on Start, then put arrow on "All Programs" and move arrow to "Accessories", then arrow to "System Tools", then arrow to "Disk Defragmenter" and click.



Volume	Session Status	File System	Capacity	Free Space	% Free Space
DSK1_VOL1 (C:)		NTFS	127 GB	61.02 GB	47 %



Estimated disk usage before defragmentation:



Estimated disk usage after defragmentation:



Analyze Defragment Pause Stop View Report

Fragmented files Contiguous files Unmovable files Free space

First step is to see if you need to Defragment your Hard Drive. Make sure your Hard Drive is highlighted then click on "Analyze"

Volume	Session Status	File System	Capacity	Free Space	% Free Space
DSK1_VOL1 (C:)	Analyzed	NTFS	127 GB	61.02 GB	47 %

Estimated disk usage before defragmentation

Estimated disk usage after defragmentation

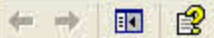
Analysis is complete for: DSK1_VOL1 (C:).
You do not need to defragment this volume.

View Report Defragment Close

Analyze Defragment Pause Stop View Report

Fragmented files Contiguous files Unmovable files Free space

Your system will do a "check" to see if you need to defrag your computer. When it is done a window will pop up and tell you whether you need to defragment or not. If not, just click on "Close" and then click on the red X in the top right corner of the Disk Defragmenter window. If it says yes, then click on "Defragment" and move to Step 4.



Volume	Session Status	File System	Capacity	Free Space	% Free Space
DSK1_VOL1 (C:)	Defragmenting...	NTFS	127 GB	61.02 GB	47 %

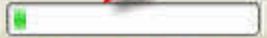
Estimated disk usage before defragmentation:



Estimated disk usage after defragmentation:

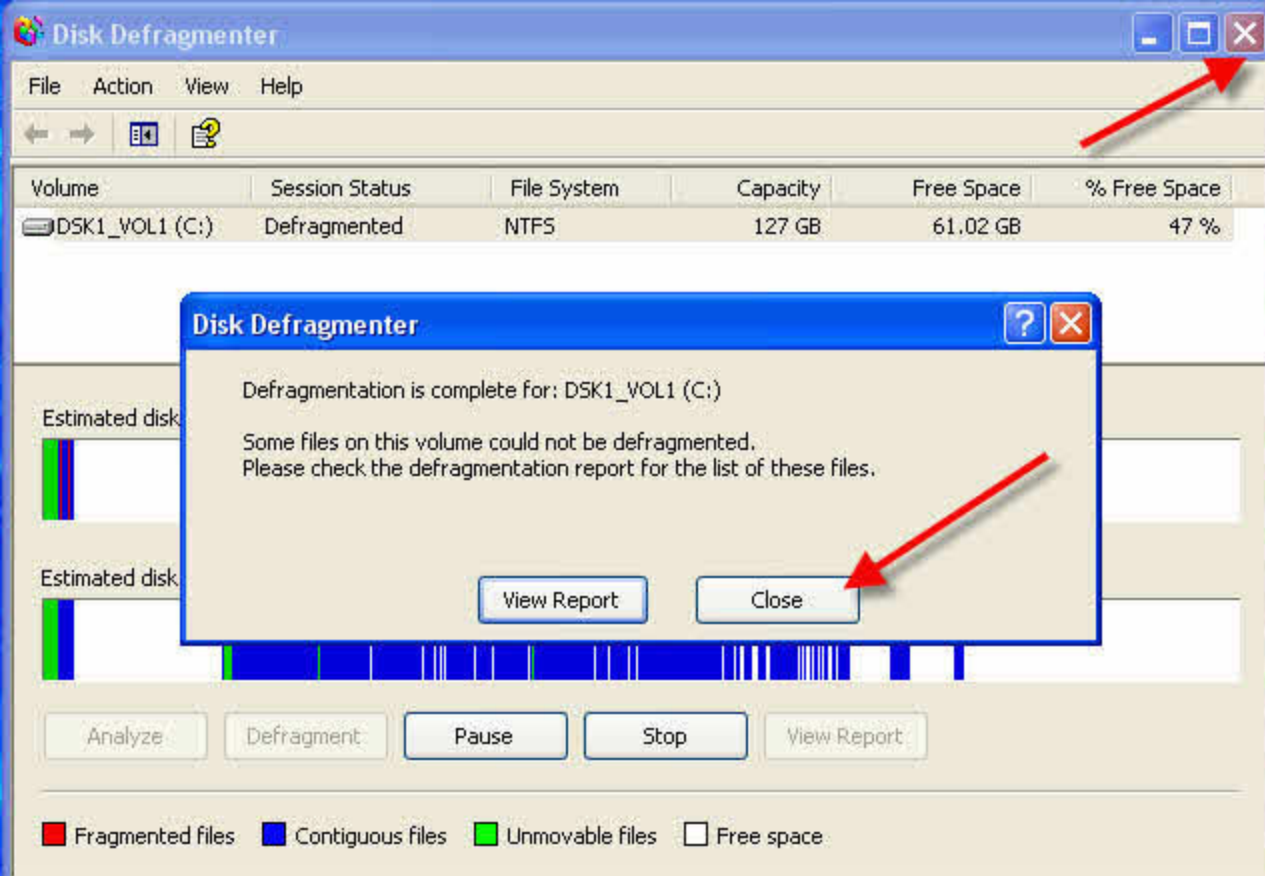


Fragmented files
 Contiguous files
 Unmovable files
 Free space



You will see the Disk Defragmenter window look something like this. It could take a long time to defragment your computer if you have a large hard drive. Watch the % and the green bars to see how it is progressing. Step 5 will show you what the pop up window looks like when it is done.





Click on "Close" and then click the red X in the Disk Defragmenter window. Every 3 months check to see if your hard Drive needs Defragmenting.